

CS AC and DC Current Switches

Input: Up to 150 Amps AC, 100 Amps DC

Output: SPDT Relay or NC or NO SSR

Economical and easy-to-install sensors for monitoring current out-of-limit conditions

- Process Limit or Motor Over-Current Alarm
- Heater Break or Conveyor Jam Alarm

Solid State Switch Models

Non-polarity sensitive magnetically isolated solid state switch

Mechanical Relay Models

5 A Isolated SPDT mechanical relay, 3 A inductive

Hysteresis

Approximately 5% of setpoint

Response Time

CS-AC: 120 milliseconds

CS-DC: 100 milliseconds (10% above setpoint)
20 milliseconds (100% above setpoint)

Datasheet Quick Link: api-usa.com/CS



CS-AC Indication

Normal operation: Red LED flashes every 2-3 seconds

Alarm: Red LED flashes 2-3 times per second

CS-DC Indication

Green LED indicates when unit is on
Red LED turns on above trip point

External Dimensions

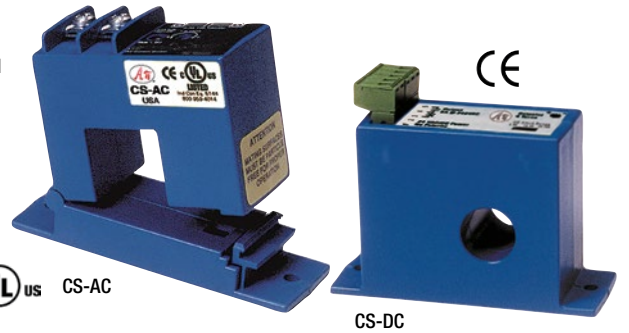
CS-AC: 3.53" W x 2.47" H x 1.19" D

CS-DC: 3.88" W x 2.9" H x 1.5" D

Isolation

CS-AC: 1270 VAC

CS-DC: 3 kV



Model	Setpoint Range	Freq. Range	Type	Power	Relay Type	Relay Rating
CS-AC-1	1.75 to 150 AAC adjustable via 11 turn potentiometer	6 to 100 Hz	Split core 0.85" x 0.85" aperture	Self	NC SSR	0.2 A at 135 VAC/VDC
CS-AC-2					NO SSR	0.15 A at 240 VAC/VDC
CS-DC-1S-12	Jumper selectable Low: 2 to 20 A Mid: 10 to 50 A High: 20 to 100 A adjustable via 9 turn potentiometer	DC to 400 Hz	Solid core 0.74" dia. aperture	12 VAC/VDC ±10% 20 to 28 VAC/VDC	SPDT	5 A @ 240 VAC, 3 A ind., 5 A @ 30 VDC
CS-DC-2S-12					NO SSR	0.15 A at 240 VAC/VDC
CS-DC-1S-24					SPDT	5 A @ 240 VAC, 3 A ind., 5 A @ 30 VDC
CS-DC-2S-24					NO SSR	0.15 A at 240 VAC/VDC

CTX AC and DC Current Transmitters

Input: 0-2 Amps to 2000 Amps

Output: 4-20 mA

Easy-to-install sensors for converting current measurements to a standard 4-20 mA signal

- VFD or SCR Control Monitoring
- Machinery, Building, or Lighting Power

Power

AC: powered by 4-20 mA current loop
DC: externally powered

Frequency Range

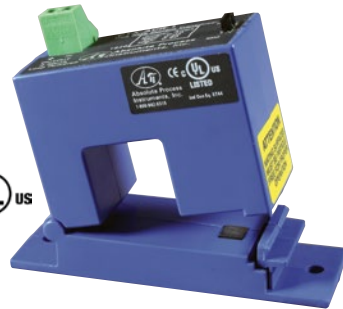
CTX-AC 50 to 60 Hz sinusoidal
CTX-ACR 10 to 400 Hz

Datasheet Quick Link: api-usa.com/current



CTX-AC-0, -1, -2

CTX-ACR-0, -1, -2



Model	Type	Selectable AC Current Ranges	Select	Aperture	Ext. Dim.	Isolation	Response	Accuracy	Output	Limit		
CTX-AC-0	Averaging	0-2 A	Jumper	0.85" x 0.85" split core	3.53" W x 2.61" H x 1.18" D	UL listed to 1270 VAC, tested to 5000 VAC	600 msec to 90% step change	±0.8% FS	4-20 mA powered by loop	23 mA max.		
CTX-ACR-0	True RMS	0-5 A										
CTX-AC-1	Averaging	0-10 A									0-20 A	0-50 A
CTX-ACR-1	True RMS	0-100 A									0-150 A	0-200 A
CTX-AC-2	Averaging	0-375 A	Switch	3.0" dia. solid core	4.5" W x 5.74" H x 2.50" D	600 VAC	100 msec 10% to 90% step change	±1% FS	4-20 mA powered by loop	23 mA max.		
CTX-ACR-2	True RMS											
CTX-AC-3S	Averaging	0-1000 A	Jumper	0.85" x 0.85" split core	3.53" W x 2.70" H x 1.18" D	3000 V	100 msec to 90% step change	±0.8% FS	4-20 mA powered by 20 to 50 VDC or 22 to 38 VAC	23 mA max.		
CTX-ACR-3S	True RMS										0-750 A	
CTX-AC-4S	Averaging	0-1000 A	Jumper	0.85" x 0.85" split core	3.53" W x 2.70" H x 1.18" D	3000 V	100 msec to 90% step change	±0.8% FS	4-20 mA powered by 20 to 50 VDC or 22 to 38 VAC	23 mA max.		
CTX-ACR-4S	True RMS										0-1333 A	0-2000 A
CTX-DC-0	DC	0-50 A	Jumper	0.85" x 0.85" split core	3.53" W x 2.70" H x 1.18" D	3000 V	100 msec to 90% step change	±0.8% FS	4-20 mA powered by 20 to 50 VDC or 22 to 38 VAC	23 mA max.		
CTX-DC-1	DC	0-100 A									0-150 A	0-200 A
CTX-DC-2	DC	0-150 A									0-225 A	0-300 A
CTX-DC-3	DC	0-200 A									0-300 A	0-400 A